



COTTONWOOD - WESTERN GARDENS

550 S 600 E, SALT LAKE CITY, UTAH

COTTONWOOD - WESTERN GARDENS

550 S 600 E SALT LAKE CITY, UTAH

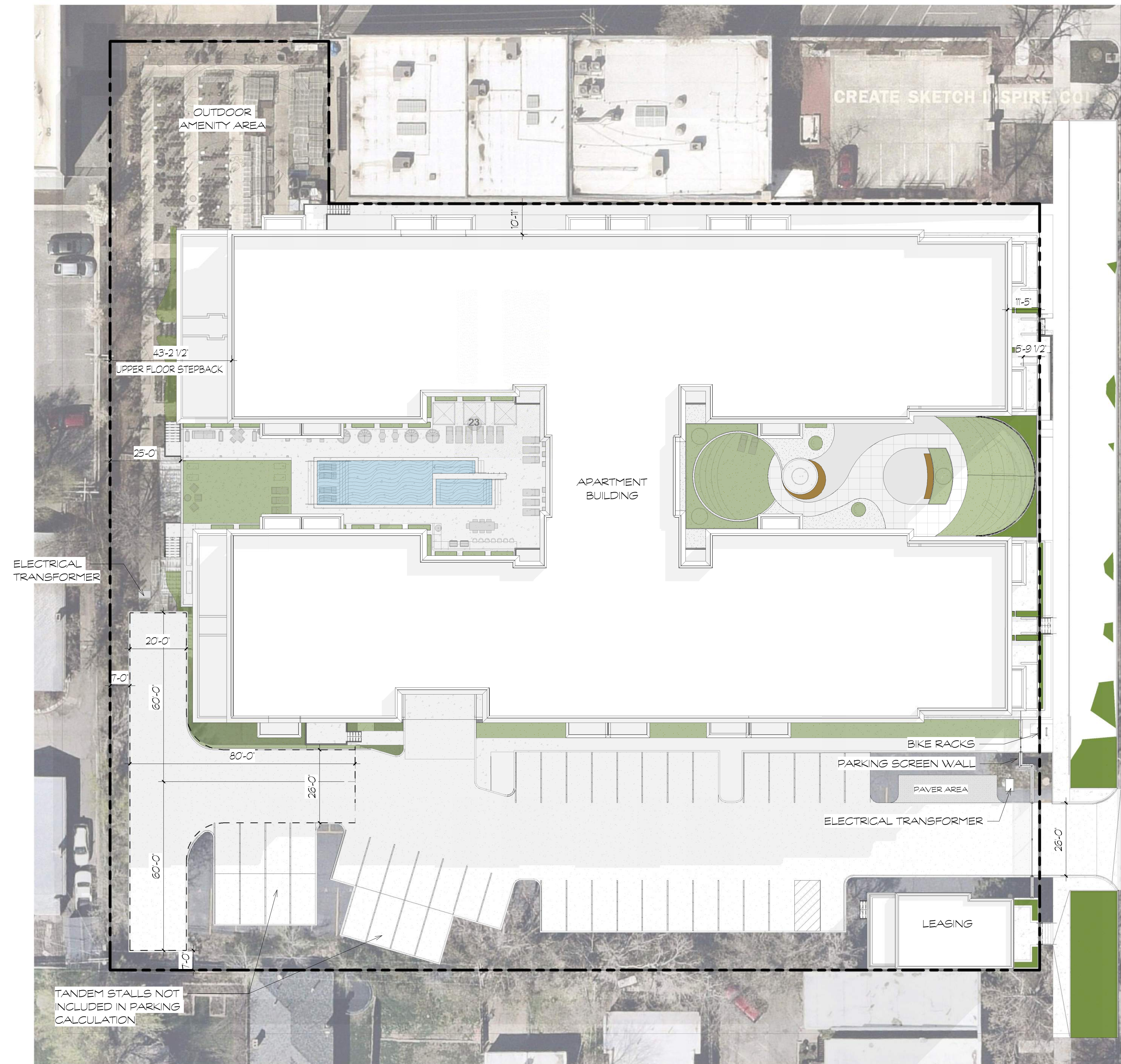
THESE PLANS ARE INSTRUMENTS OF PROFESSIONAL SERVICE, ARE THE INTELLECTUAL PROPERTY OF ARCHITECTURE BELGIQUE, INC., AND ARE PROTECTED BY COMMON LAW, STATUTORY AND OTHER RESERVED RIGHTS INCLUDING, BUT NOT LIMITED TO, COPYRIGHT. THEY MAY NOT BE REPRODUCED OR USED FOR ANY PURPOSE WITHOUT THE WRITTEN CONSENT OF ARCHITECTURE BELGIQUE, INC.

Cover

4-15-24



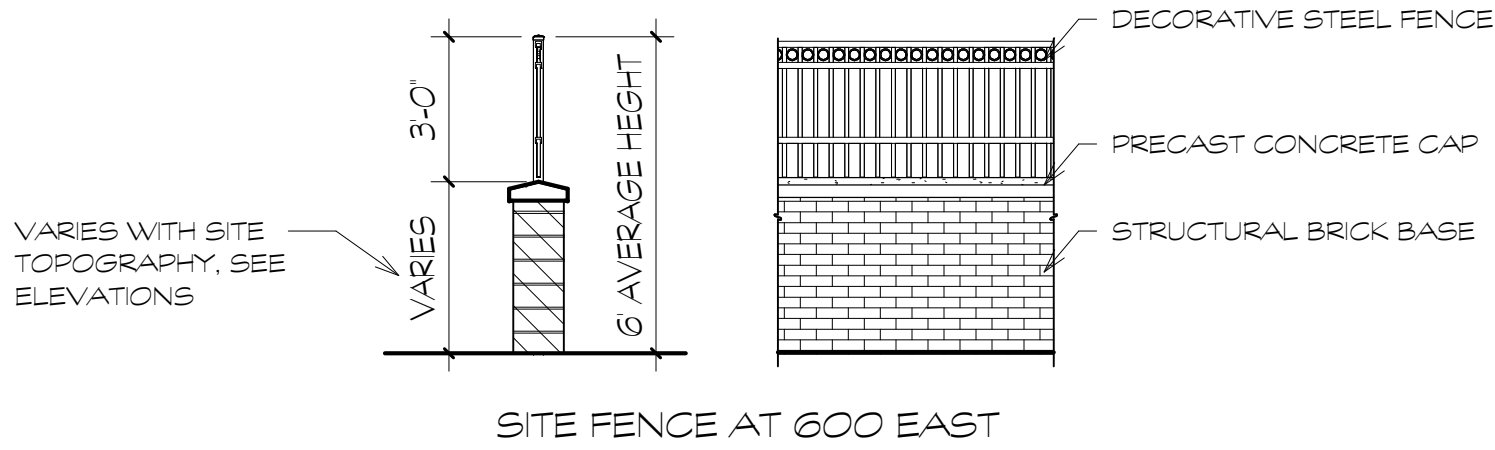
7583 S. Main St. #100 Midvale, UT 84047
801-561-1333



PARKING PROVIDED

Type	Count
8-3 x 18' - Garage Stall	43
9-0 x 18' - Surface Stall	35
9-3 x 18' - Garage Stall	101

Grand total: 179



COTTONWOOD - WESTERN GARDENS

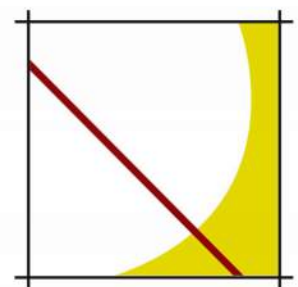
550 S 600 E SALT LAKE CITY, UTAH

THESE PLANS ARE INSTRUMENTS OF PROFESSIONAL SERVICE, ARE THE INTELLECTUAL PROPERTY OF ARCHITECTURE BELGIQUE, INC., AND ARE PROTECTED BY COMMON LAW, STATUTORY AND OTHER RESERVED RIGHTS INCLUDING, BUT NOT LIMITED TO, COPYRIGHT. THEY MAY NOT BE REPRODUCED OR USED FOR ANY PURPOSE WITHOUT THE WRITTEN CONSENT OF ARCHITECTURE BELGIQUE, INC.



SITE PLAN

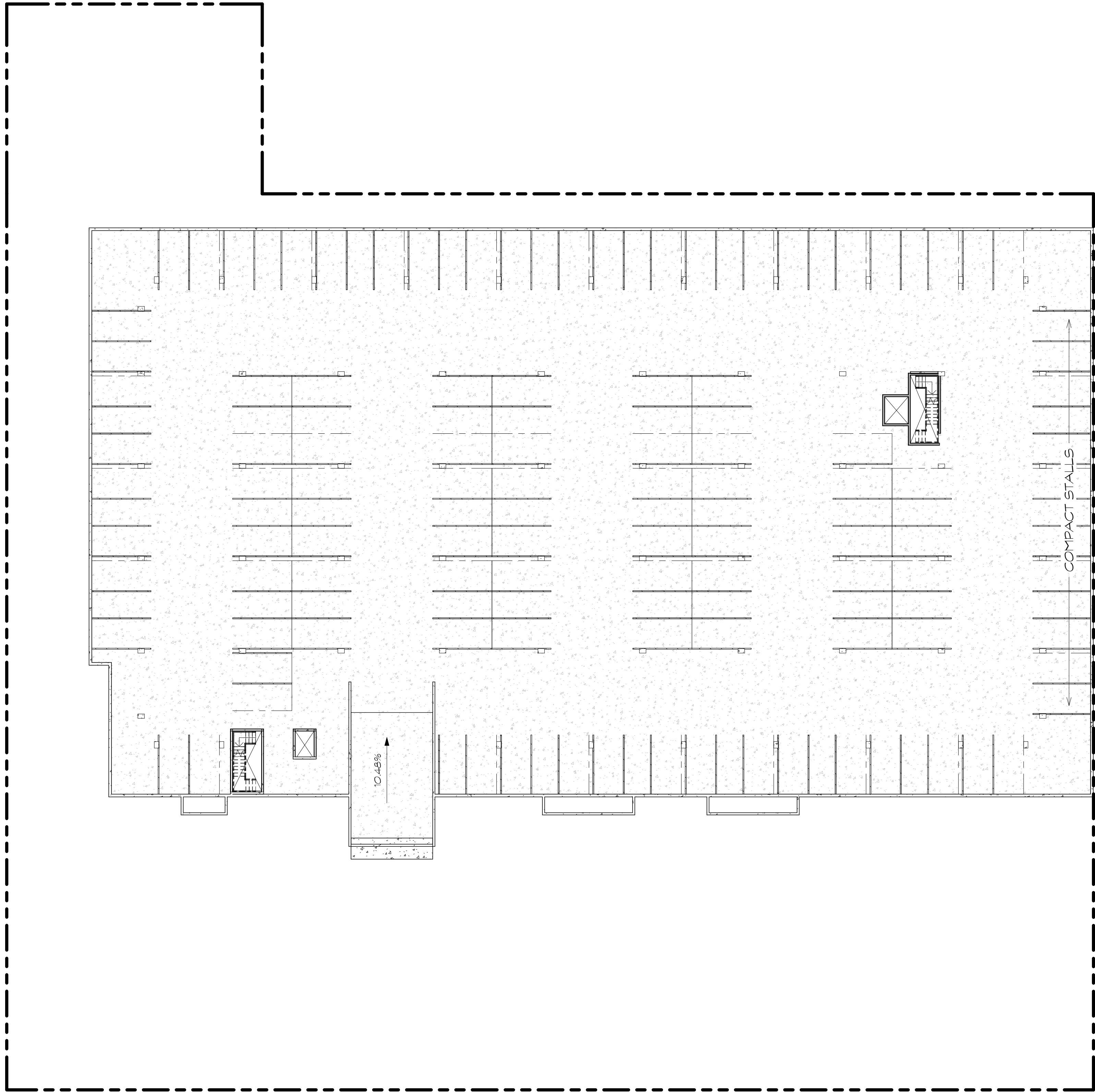
4-15-24



Architecture
Belgique, Inc.

7583 S. Main St. #100 Midvale, UT 84047
801-561-1333

PARKING PROVIDED	
Type	Count
8'-3" x 18" - Garage Stall	43
9'-0" x 18" - Surface Stall	35
9'-3" x 18" - Garage Stall	101
Grand total: 179	



COTTONWOOD - WESTERN GARDENS

550 S 600 E SALT LAKE CITY, UTAH

THESE PLANS ARE INSTRUMENTS OF PROFESSIONAL SERVICE, ARE THE INTELLECTUAL PROPERTY OF ARCHITECTURE BELGIQUE, INC., AND ARE PROTECTED BY COMMON LAW, STATUTORY AND OTHER RESERVED RIGHTS INCLUDING, BUT NOT LIMITED TO, COPYRIGHT. THEY MAY NOT BE REPRODUCED OR USED FOR ANY PURPOSE WITHOUT THE WRITTEN CONSENT OF ARCHITECTURE BELGIQUE, INC.

LEVEL P1

4-15-24



7583 S. Main St. #100 Midvale, UT 84047
801-561-1333



UNIT COUNT	
Name	Count
Level 1	
UNIT - 1B	14
UNIT - 1C	4
UNIT - 1D	2
UNIT - 2B	4
UNIT - 2C	2
UNIT - SB	12
UNIT - SC	1
Level 2	
UNIT - 1B	14
UNIT - 1C	4
UNIT - 1D	3
UNIT - 2B	4
UNIT - 2C	4
UNIT - SB	12
UNIT - SC	2
Level 3	
UNIT - 1B	14
UNIT - 1C	4
UNIT - 1D	3
UNIT - 2B	4
UNIT - 2C	4
UNIT - SB	12
UNIT - SC	2
Level 4	
UNIT - 1B	14
UNIT - 1C	4
UNIT - 1D	3
UNIT - 1E	2
UNIT - 2B	2
UNIT - 2C	4
UNIT - SB	10
UNIT - SC	2
Grand total: 166	

COTTONWOOD - WESTERN GARDENS

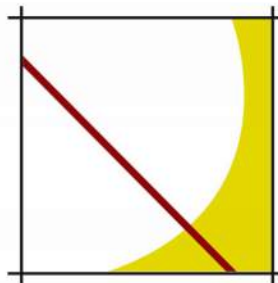
550 S 600 E SALT LAKE CITY, UTAH

THESE PLANS ARE INSTRUMENTS OF PROFESSIONAL SERVICE, ARE THE INTELLECTUAL PROPERTY OF ARCHITECTURE BELGIQUE, INC., AND ARE PROTECTED BY COMMON LAW, STATUTORY AND OTHER RESERVED RIGHTS INCLUDING, BUT NOT LIMITED TO, COPYRIGHT. THEY MAY NOT BE REPRODUCED OR USED FOR ANY PURPOSE WITHOUT THE WRITTEN CONSENT OF ARCHITECTURE BELGIQUE, INC.



LEVEL 1

4-15-24



Architecture
Belgique, Inc.

7583 S. Main St. #100 Midvale, UT 84047
801-561-1333



UNIT COUNT	
Name	Count
Level 1	
UNIT - 1B	14
UNIT - 1C	4
UNIT - 1D	2
UNIT - 2B	4
UNIT - 2C	2
UNIT - SB	12
UNIT - SC	1
Level 2	
UNIT - 1B	14
UNIT - 1C	4
UNIT - 1D	3
UNIT - 2B	4
UNIT - 2C	4
UNIT - SB	12
UNIT - SC	2
Level 3	
UNIT - 1B	14
UNIT - 1C	4
UNIT - 1D	3
UNIT - 2B	4
UNIT - 2C	4
UNIT - SB	12
UNIT - SC	2
Level 4	
UNIT - 1B	14
UNIT - 1C	4
UNIT - 1D	3
UNIT - 1E	2
UNIT - 2B	2
UNIT - 2C	4
UNIT - SB	10
UNIT - SC	2
Grand total: 166	

COTTONWOOD - WESTERN GARDENS

550 S 600 E SALT LAKE CITY, UTAH

THESE PLANS ARE INSTRUMENTS OF PROFESSIONAL SERVICE, ARE THE INTELLECTUAL PROPERTY OF ARCHITECTURE BELGIQUE, INC., AND ARE PROTECTED BY COMMON LAW, STATUTORY AND OTHER RESERVED RIGHTS INCLUDING, BUT NOT LIMITED TO, COPYRIGHT. THEY MAY NOT BE REPRODUCED OR USED FOR ANY PURPOSE WITHOUT THE WRITTEN CONSENT OF ARCHITECTURE BELGIQUE, INC.



LEVEL 2

4-15-24



Architecture
Belgique, Inc.

7583 S. Main St. #100 Midvale, UT 84047
801-561-1333



UNIT COUNT	
Name	Count
Level 1	
UNIT - 1B	14
UNIT - 1C	4
UNIT - 1D	2
UNIT - 2B	4
UNIT - 2C	2
UNIT - SB	12
UNIT - SC	1
Level 2	
UNIT - 1B	14
UNIT - 1C	4
UNIT - 1D	3
UNIT - 2B	4
UNIT - 2C	4
UNIT - SB	12
UNIT - SC	2
Level 3	
UNIT - 1B	14
UNIT - 1C	4
UNIT - 1D	3
UNIT - 2B	4
UNIT - 2C	4
UNIT - SB	12
UNIT - SC	2
Level 4	
UNIT - 1B	14
UNIT - 1C	4
UNIT - 1D	3
UNIT - 1E	2
UNIT - 2B	2
UNIT - 2C	4
UNIT - SB	10
UNIT - SC	2
Grand total: 166	

COTTONWOOD - WESTERN GARDENS

550 S 600 E SALT LAKE CITY, UTAH

THESE PLANS ARE INSTRUMENTS OF PROFESSIONAL SERVICE, ARE THE INTELLECTUAL PROPERTY OF ARCHITECTURE BELGIQUE, INC., AND ARE PROTECTED BY COMMON LAW, STATUTORY AND OTHER RESERVED RIGHTS INCLUDING, BUT NOT LIMITED TO, COPYRIGHT. THEY MAY NOT BE REPRODUCED OR USED FOR ANY PURPOSE WITHOUT THE WRITTEN CONSENT OF ARCHITECTURE BELGIQUE, INC.

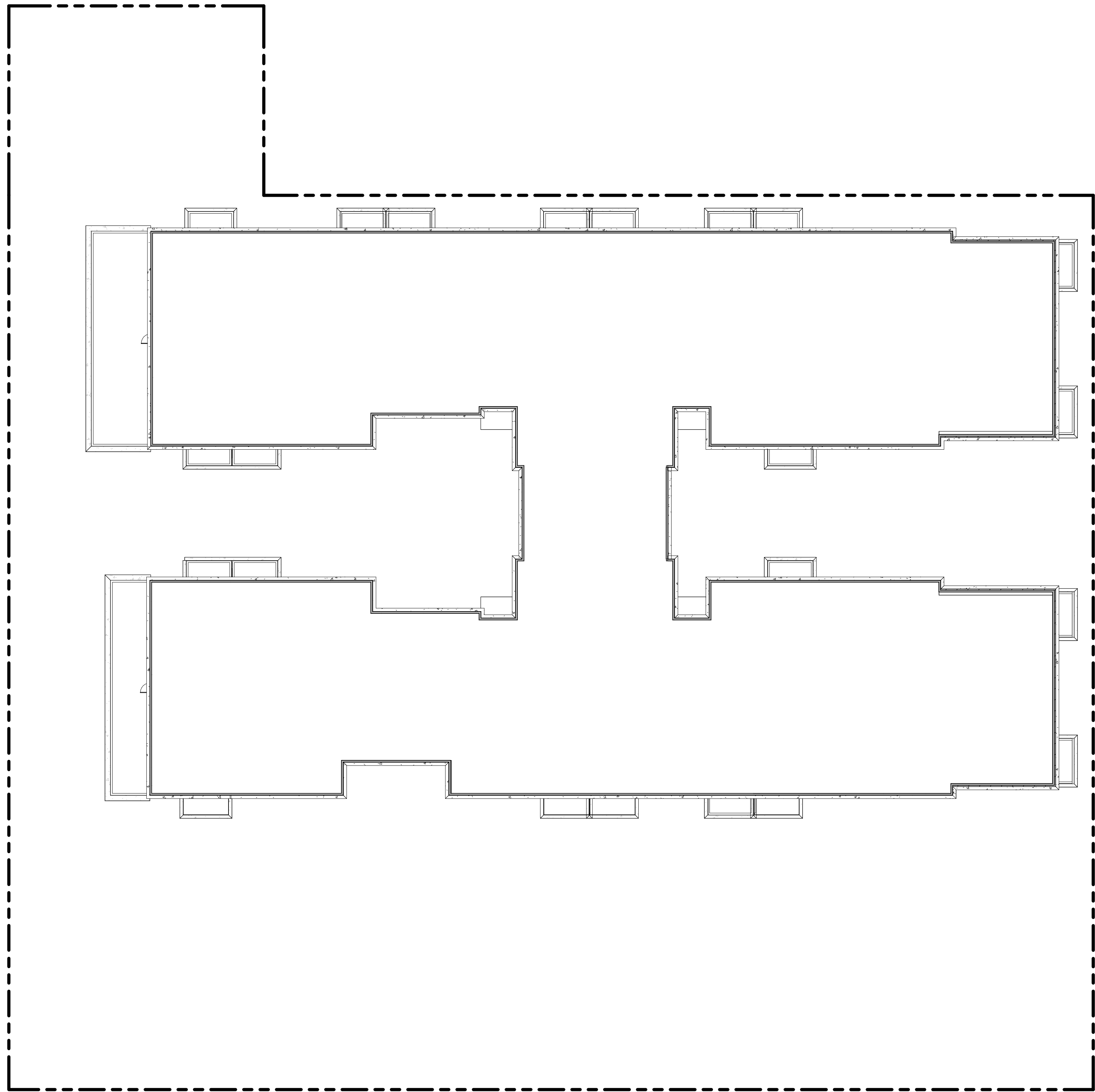


LEVEL 3

4-15-24



7583 S. Main St. #100 Midvale, UT 84047
801-561-1333



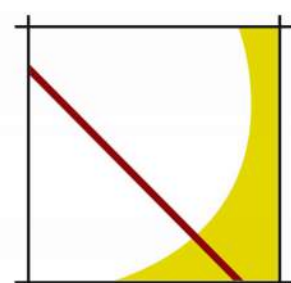
COTTONWOOD - WESTERN GARDENS

550 S 600 E SALT LAKE CITY, UTAH



ROOF

4-15-24



Architecture
Belgique, Inc.

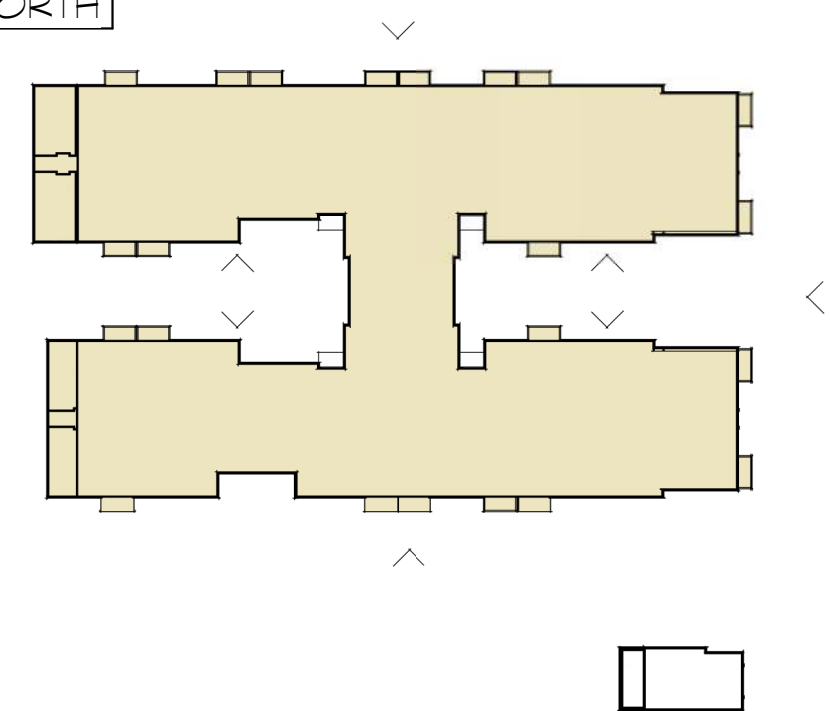
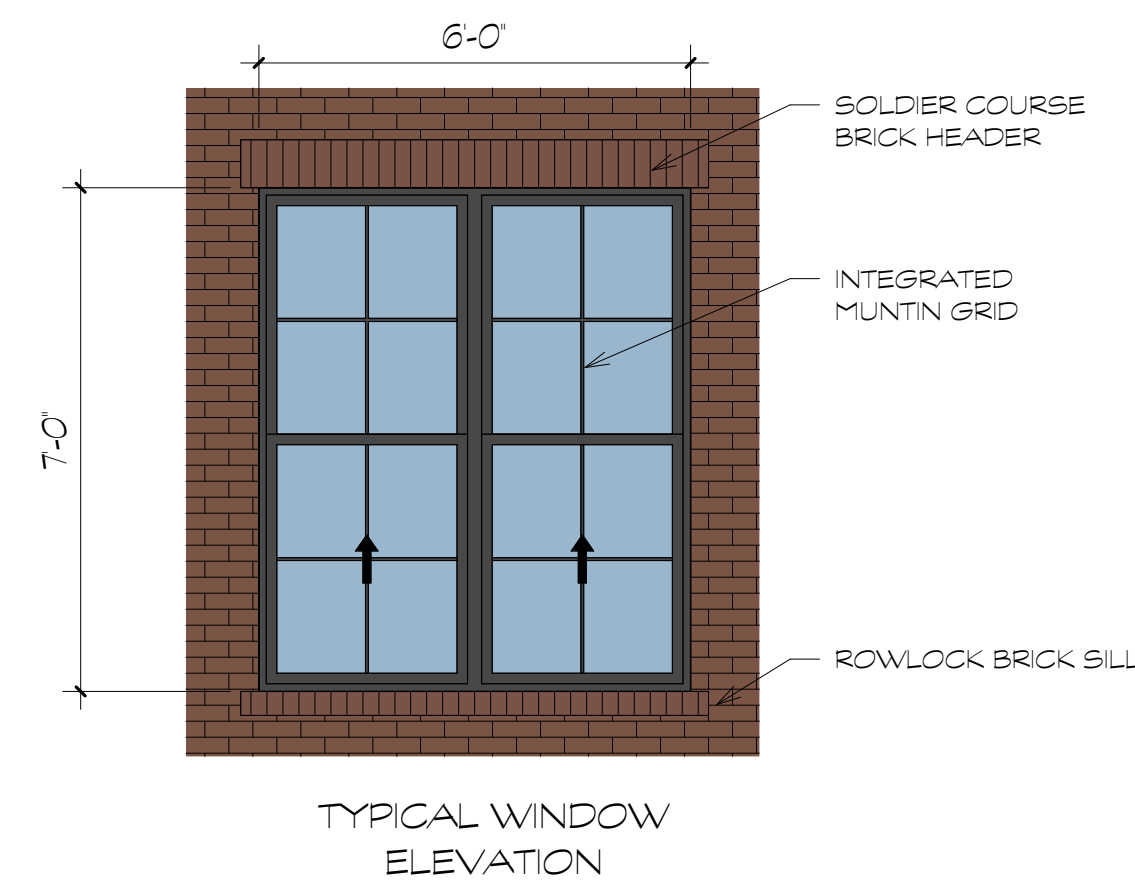
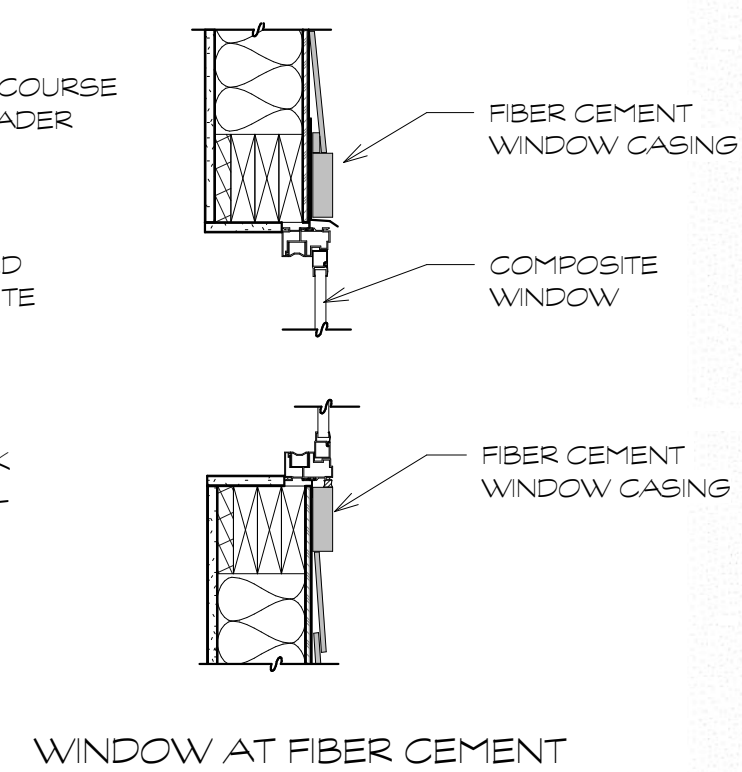
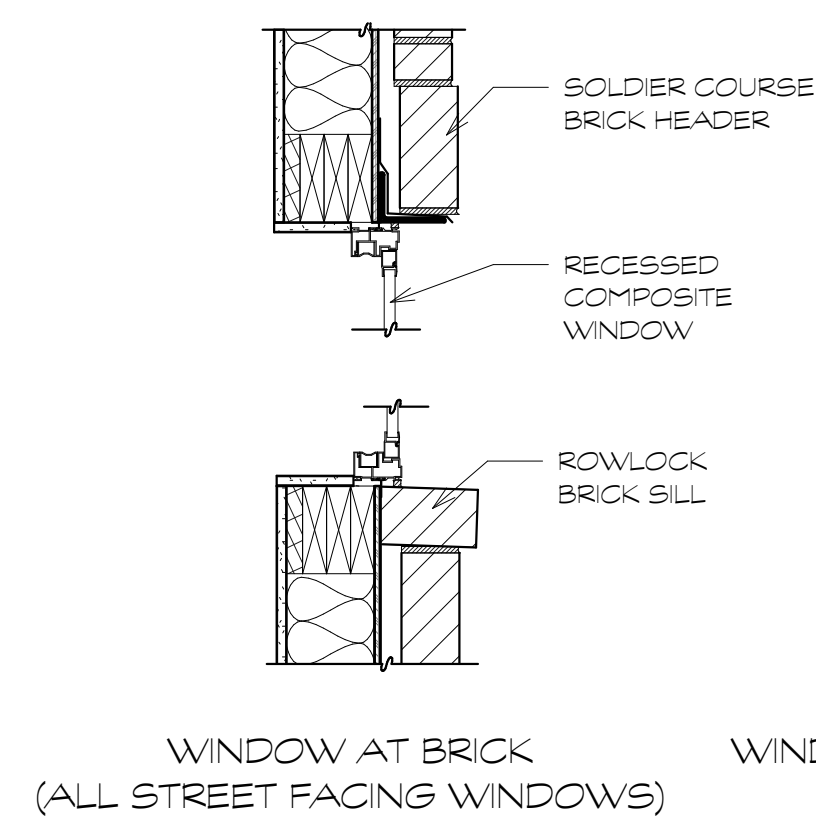
7583 S. Main St. #100 Midvale, UT 84047
801-561-1333

THESE PLANS ARE INSTRUMENTS OF PROFESSIONAL SERVICE, ARE THE INTELLECTUAL PROPERTY OF ARCHITECTURE BELGIQUE, INC., AND ARE PROTECTED BY COMMON LAW, STATUTORY AND OTHER RESERVED RIGHTS INCLUDING, BUT NOT LIMITED TO, COPYRIGHT. THEY MAY NOT BE REPRODUCED OR USED FOR ANY PURPOSE WITHOUT THE WRITTEN CONSENT OF ARCHITECTURE BELGIQUE, INC.



MATERIAL LEGEND

	BRICK VENEER
	FIBER CEMENT SIDING
	CONCRETE
	GLAZING
	CAST STONE



COTTONWOOD - WESTERN GARDENS

550 S 600 E SALT LAKE CITY, UTAH

ELEVATIONS

4-15-24

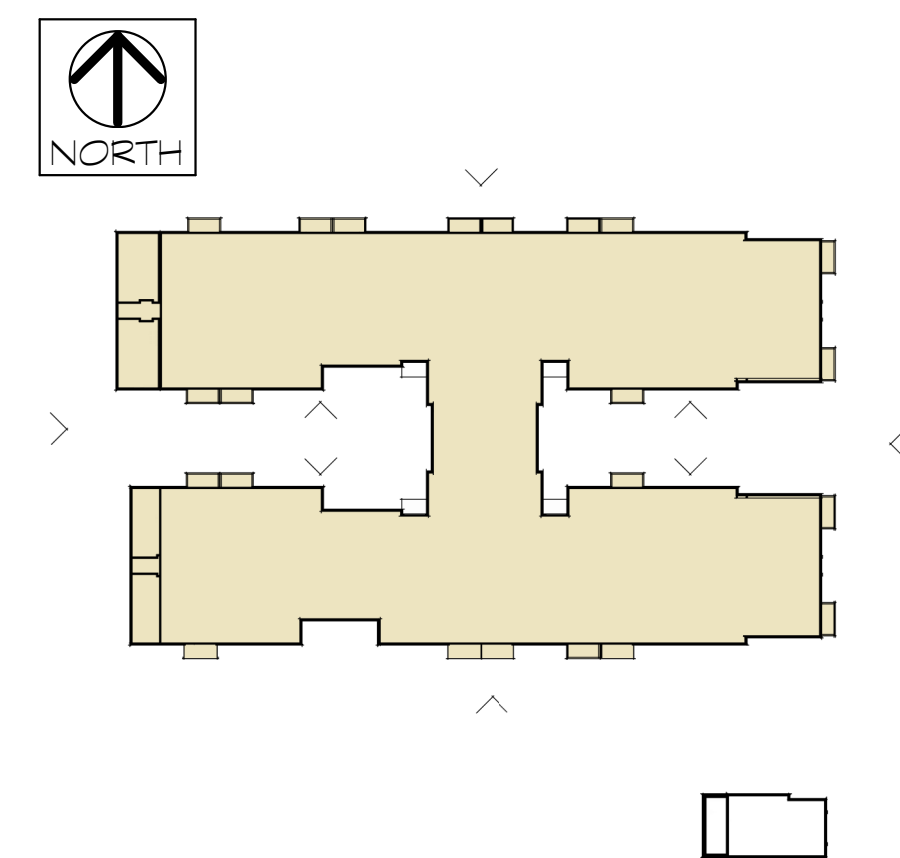


7583 S. Main St. #100 Midvale, UT 84047
801-561-1333

THESE PLANS ARE INSTRUMENTS OF PROFESSIONAL SERVICE, ARE THE INTELLECTUAL PROPERTY OF ARCHITECTURE BELGIQUE, INC., AND ARE PROTECTED BY COMMON LAW, STATUTORY AND OTHER RESERVED RIGHTS INCLUDING, BUT NOT LIMITED TO, COPYRIGHT. THEY MAY NOT BE REPRODUCED OR USED FOR ANY PURPOSE WITHOUT THE WRITTEN CONSENT OF ARCHITECTURE BELGIQUE, INC.



MATERIAL LEGEND	
	BRICK VENEER
	FIBER CEMENT SIDING
	CONCRETE
	GLAZING
	CAST STONE



COTTONWOOD - WESTERN GARDENS

550 S 600 E SALT LAKE CITY, UTAH

ELEVATIONS

4-15-24



7583 S. Main St. #100 Midvale, UT 84047
801-561-1333

THESE PLANS ARE INSTRUMENTS OF PROFESSIONAL SERVICE, ARE THE INTELLECTUAL PROPERTY OF ARCHITECTURE BELGIQUE, INC., AND ARE PROTECTED BY COMMON LAW, STATUTORY AND OTHER RESERVED RIGHTS INCLUDING, BUT NOT LIMITED TO, COPYRIGHT. THEY MAY NOT BE REPRODUCED OR USED FOR ANY PURPOSE WITHOUT THE WRITTEN CONSENT OF ARCHITECTURE BELGIQUE, INC.



EAST COURTYARD - NORTH ELEVATION

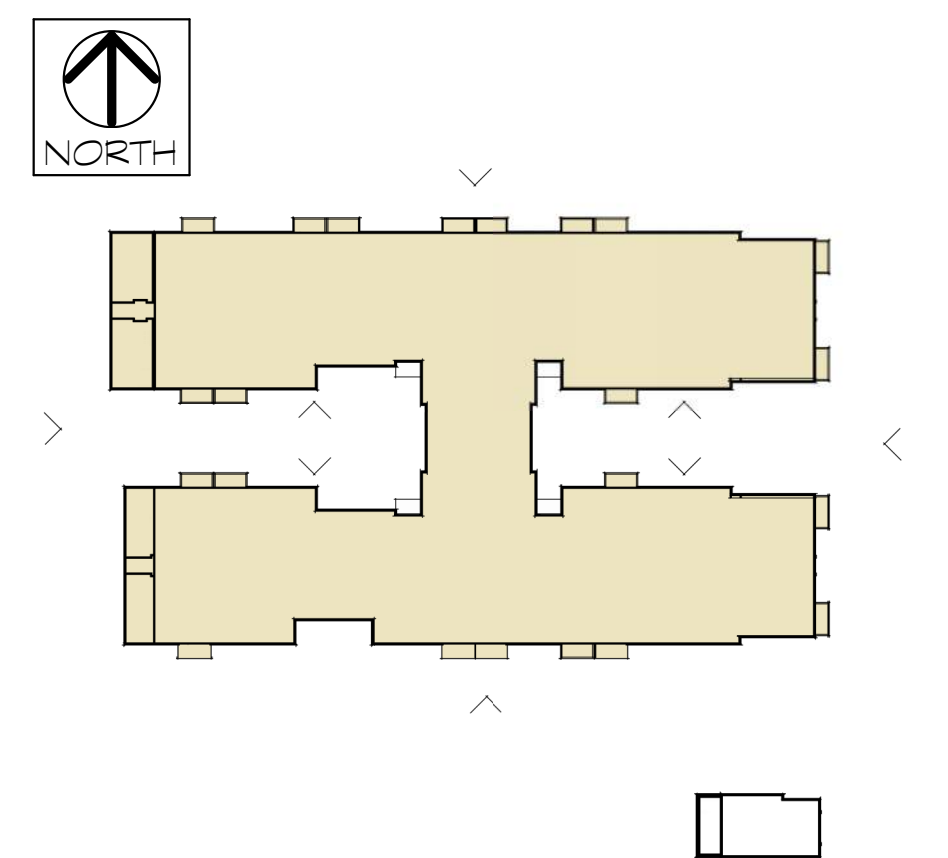


EAST COURTYARD - WEST ELEVATION



EAST COURTYARD - SOUTH ELEVATION

MATERIAL LEGEND	
	BRICK VENEER
	FIBER CEMENT SIDING
	CONCRETE
	GLAZING
	CAST STONE

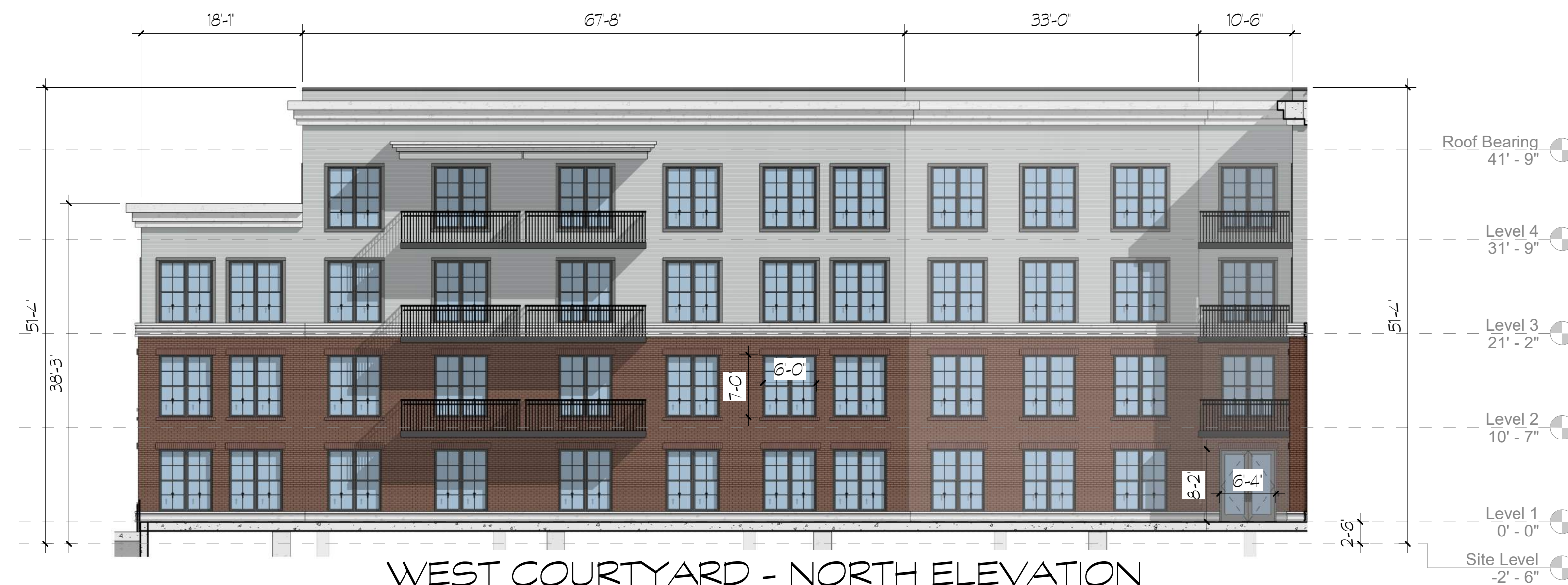


COTTONWOOD - WESTERN GARDENS

550 S 600 E SALT LAKE CITY, UTAH

ELEVATIONS

4-15-24



WEST COURTYARD - NORTH ELEVATION

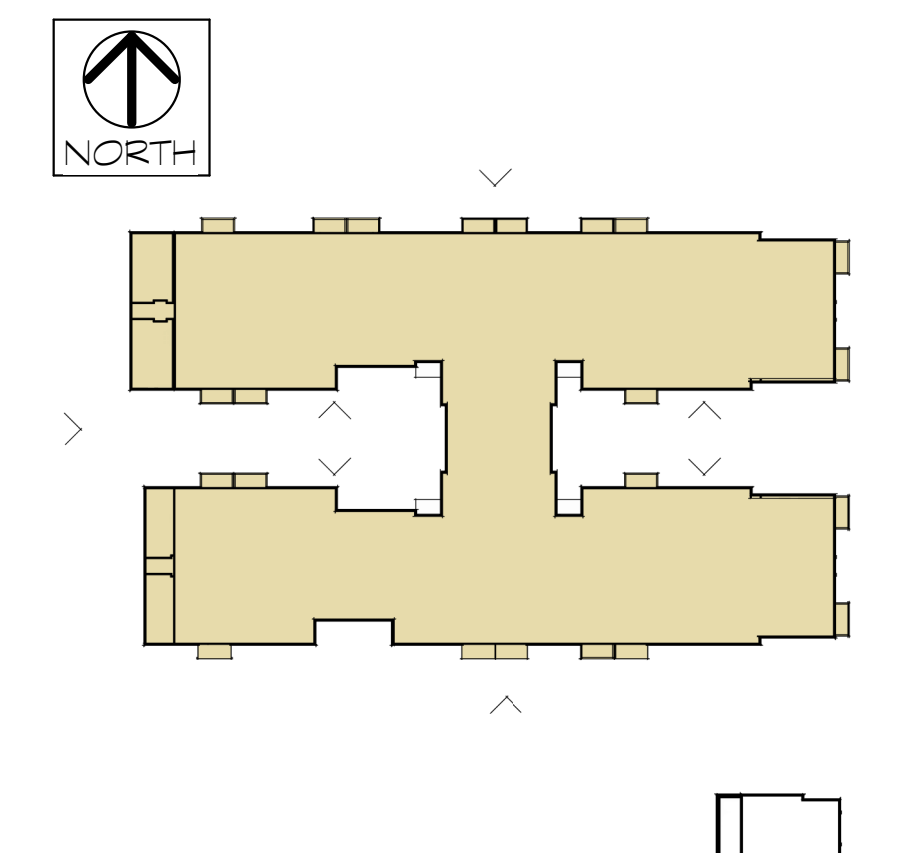


WEST COURTYARD - EAST ELEVATION



WEST COURTYARD - SOUTH ELEVATION

MATERIAL LEGEND	
	BRICK VENEER
	FIBER CEMENT SIDING
	CONCRETE
	GLAZING
	CAST STONE



COTTONWOOD - WESTERN GARDENS

550 S 600 E SALT LAKE CITY, UTAH

ELEVATIONS

4-15-24

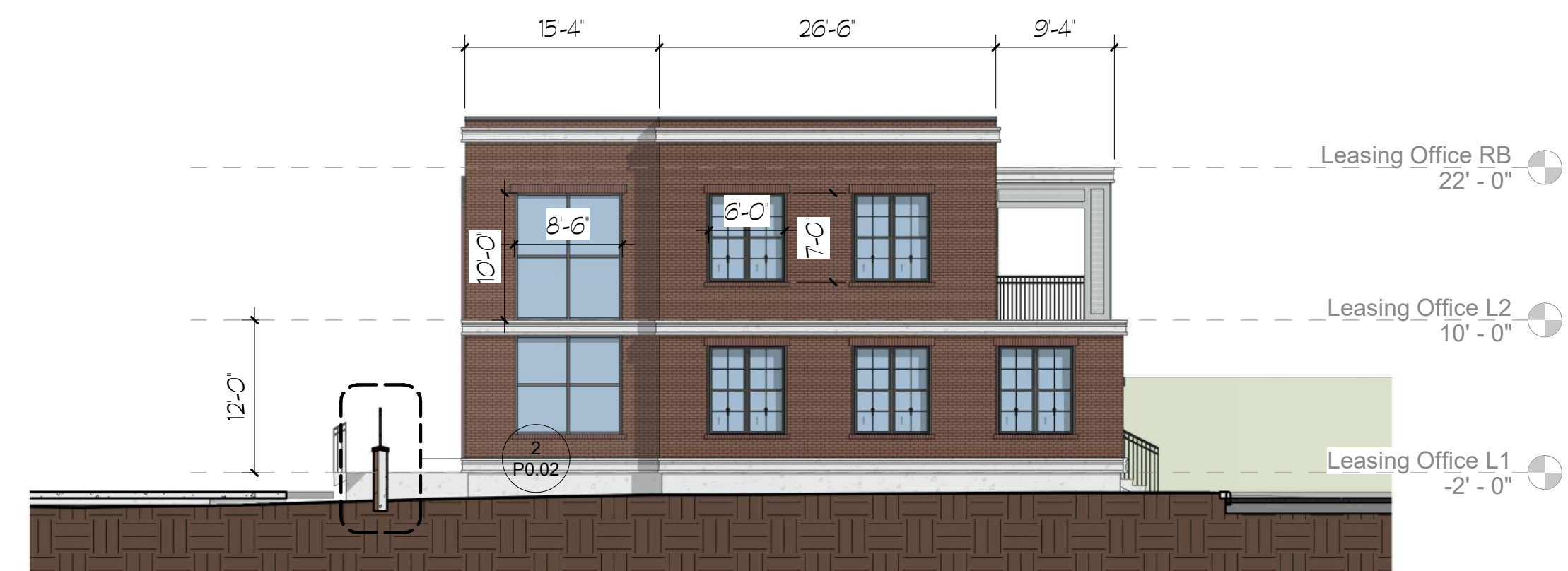


7583 S. Main St. #100 Midvale, UT 84047
801-561-1333

THESE PLANS ARE INSTRUMENTS OF PROFESSIONAL SERVICE, ARE THE INTELLECTUAL PROPERTY OF ARCHITECTURE BELGIQUE, INC., AND ARE PROTECTED BY COMMON LAW, STATUTORY AND OTHER RESERVED RIGHTS INCLUDING, BUT NOT LIMITED TO, COPYRIGHT. THEY MAY NOT BE REPRODUCED OR USED FOR ANY PURPOSE WITHOUT THE WRITTEN CONSENT OF ARCHITECTURE BELGIQUE, INC.



LEASING OFFICE - EAST ELEVATION



LEASING OFFICE - NORTH ELEVATION

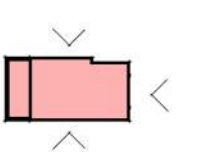
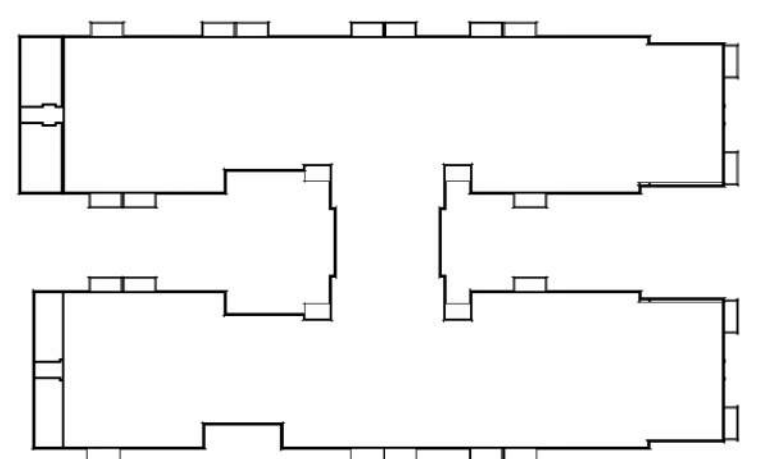
MATERIAL LEGEND	
	BRICK VENEER
	FIBER CEMENT SIDING
	CONCRETE
	GLAZING
	CAST STONE



LEASING OFFICE - SOUTH ELEVATION



LEASING OFFICE - WEST ELEVATION

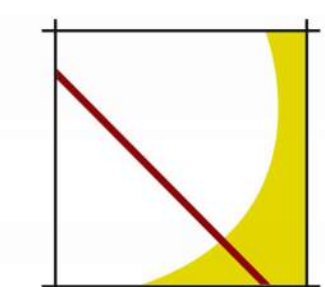


COTTONWOOD - WESTERN GARDENS

550 S 600 E SALT LAKE CITY, UTAH

ELEVATIONS

4-15-24



Architecture
Belgique, Inc.

7583 S. Main St. #100 Midvale, UT 84047
801-561-1333

THESE PLANS ARE INSTRUMENTS OF PROFESSIONAL SERVICE, ARE THE INTELLECTUAL PROPERTY OF ARCHITECTURE BELGIQUE, INC., AND ARE PROTECTED BY COMMON LAW, STATUTORY AND OTHER RESERVED RIGHTS INCLUDING, BUT NOT LIMITED TO, COPYRIGHT. THEY MAY NOT BE REPRODUCED OR USED FOR ANY PURPOSE WITHOUT THE WRITTEN CONSENT OF ARCHITECTURE BELGIQUE, INC.



SOUTH-EAST STREET VIEW



NORTH-EAST STREET VIEW



FRONT STREET VIEW



NORTH-EAST AERIAL VIEW



SOUTH-EAST STREET VIEW



SOUTH-EAST AERIAL VIEW

COTTONWOOD - WESTERN GARDENS

550 S 600 E SALT LAKE CITY, UTAH

THESE PLANS ARE INSTRUMENTS OF PROFESSIONAL SERVICE, ARE THE INTELLECTUAL PROPERTY OF ARCHITECTURE BELGIQUE, INC., AND ARE PROTECTED BY COMMON LAW, STATUTORY AND OTHER RESERVED RIGHTS INCLUDING, BUT NOT LIMITED TO, COPYRIGHT. THEY MAY NOT BE REPRODUCED OR USED FOR ANY PURPOSE WITHOUT THE WRITTEN CONSENT OF ARCHITECTURE BELGIQUE, INC.

RENDERINGS

4-15-24



7583 S. Main St. #100 Midvale, UT 84047
801-561-1333



LANDSCAPE CONCEPT SCHEDULE

- 1 FENCED SMALL DOG AREA
- 2 FENCED DOG PARK
- 3 COVERED PARK SPACE
- 4 PARK STYLE SEATING AREAS ALONG PEDESTRIAN CORRIDOR
- 5 TRANSFORMER
- 6 ENTRY STEPS
- 7 PRIVATE PATIO
- 8 PREFABRICATED PLANTERS
- 9 FOUNDATION PLANTING - WITHIN IN LOW WALLS TO MAINTAIN COVERAGE
- 10 LANDSCAPING BUFFER
- 11 OUTDOOR BIKE RACK AREA
- 12 PRIVACY FENCING & ACCESS GATES
- 13 MATURE TREES IN PUBLIC PARKSTRIP TO BE PROTECTED IN PLACE
- 14 SUPPLEMENTAL TREES & WATER-WISE PLANTING TO BE ADDED TO PARKSTRIP
- 15 ARTIFICIAL TURF FLEX SPACE
- 16 BERMED LOUNGE SPACE
- 17 COVERED GATHERING SPACE
- 18 WATER LOUNGERS
- 19 POOL
- 20 SPA
- 21 ACCENT TOWEL WALL
- 22 OUTDOOR KITCHEN & DINING
- 23 SUN DECK WITH CABANAS
- 24 ACCENT PAVING IN GATHERING AREA
- 25 DECORATIVE GRAVEL

COTTONWOOD - WESTERN GARDENS

550 S 600 E SALT LAKE CITY, UTAH

LANDSCAPE PLAN

4-15-24



7583 S. Main St. #100 Midvale, UT 84047
801-561-1333

THESE PLANS ARE INSTRUMENTS OF PROFESSIONAL SERVICE, ARE THE INTELLECTUAL PROPERTY OF ARCHITECTURE BELGIQUE, INC., AND ARE PROTECTED BY COMMON LAW, STATUTORY AND OTHER RESERVED RIGHTS INCLUDING, BUT NOT LIMITED TO, COPYRIGHT. THEY MAY NOT BE REPRODUCED OR USED FOR ANY PURPOSE WITHOUT THE WRITTEN CONSENT OF ARCHITECTURE BELGIQUE, INC.